



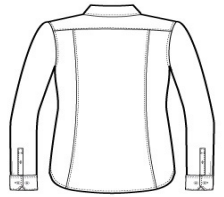
Thoroughly updated, this crisp nailhead shirt has a silky feel and a wrinkle-resistant finish for exceptional non-iron performance. 4-ounce, 60/40 cotton/polyester with taped seams, RH engraved buttons and a shirttail hem to elevate the office-ready look. Classic feminine styling with an open collar, bust darts and back seaming. Notched adjustable cuffs and button-through sleeve plackets.

**CARE INSTRUCTIONS**

Machine wash cold with like colors, only non-chlorine bleach when needed, tumble dry low, warm iron if needed.

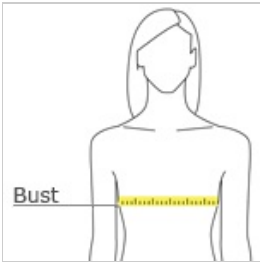


front



back

**HOW TO MEASURE**



**BUST**

With arms down at sides, measure around the upper body, under arms and around the fullest part of the bust.

**SIZE CHART**

	XS	S	M	L	XL	XXL	3XL	4XL
Size	2	4/6	8/10	12/14	16/18	20/22	24/26	28/30
Bust	32-34	35-36	37-38	39-41	42-44	45-47	48-51	52-55

**COLOR INFORMATION**

				
Black PMS NTR BLACK C	Blue Pearl PMS 7451C	Mediterranean Blue PMS 7687C	Navy PMS 2139C	White PMS WHITE